



Santa Margarita Water District

Home Tree Care Guide

- A Tree Properly Located
- B Mulch
- C Rainwater Captured
- D Permeable Surfaces
- E Drip Irrigation

Tips for Tree Health

1 Water Trees Separately
 on their own irrigation zone separate from grass and shrubs. This allows for deeper infrequent waterings and helps to prioritize keeping trees watered during a drought. A **Low Flow Drip Assembly Valve** works best if drip irrigation is being installed.

2 Spread Organic Wood Mulch that is either well composted or has a good mix of green leaf and small brown woodchip material starting **6" away from the trunk** of the tree out to the "drip line" or edge of the canopy. Try to keep the mulch at least 3-4" thick, supplemented by the natural leaf and flower detritus of the tree itself.

3 Avoid Pruning During Drought except in cases of diseased and damaged limbs or for critical fire maintenance. Excessive pruning encourages plants to redirect growth above ground and draw on greater water reserves to replace the removed canopy, which could lead to stress during dry times

Low Water Trees for Residential Garden Styles

- Cal Native
- Southwest
- Mediterranean
- Meadow
- Home Orchard



Quercus agrifolia
Coast Live Oak



Propolis chilensis
Thornless Chilean Mesquite



Arbutus 'Marina'
Marina Strawberry Tree

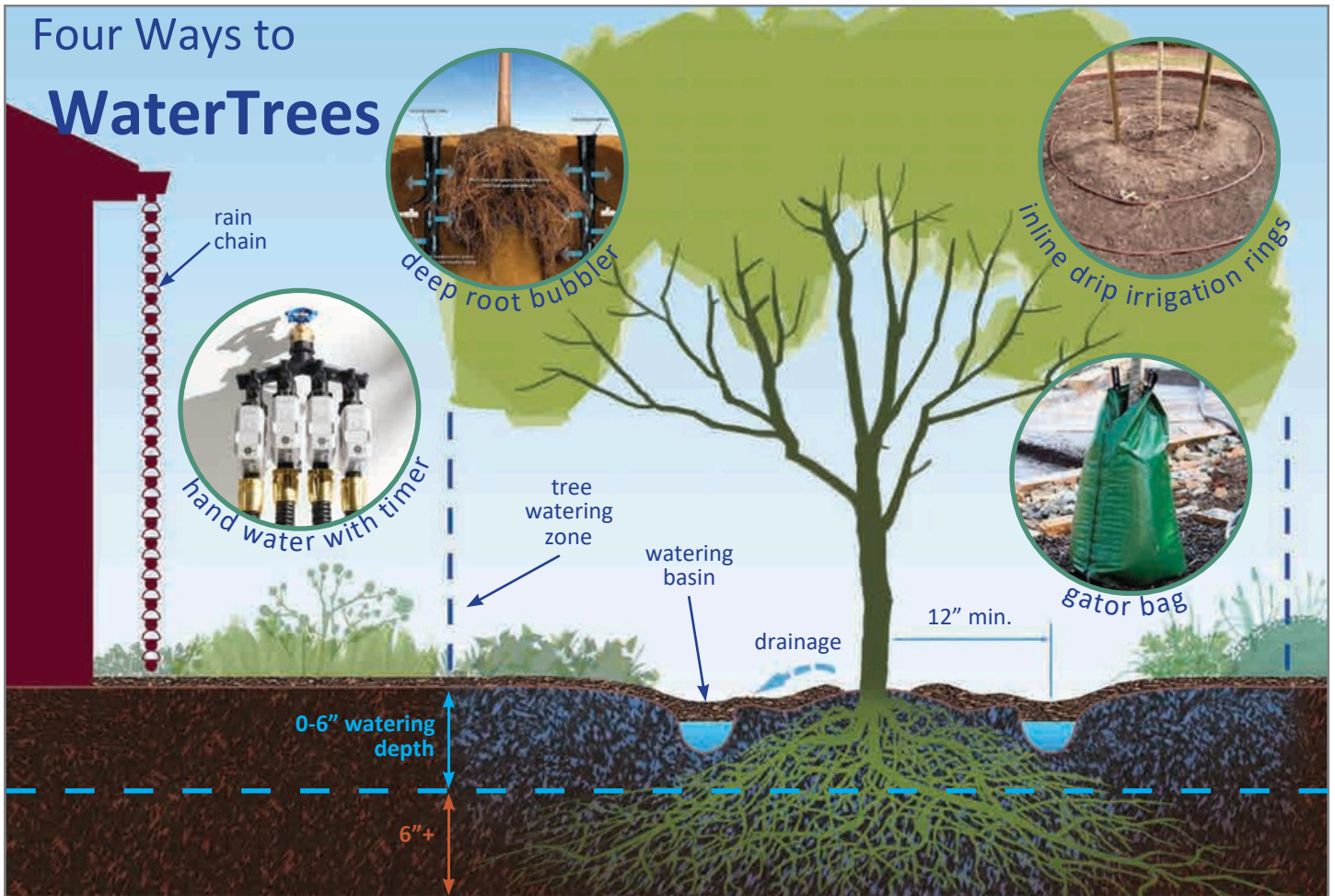


Chilopsis linearis
Desert Willow



Punica granatum
Pomegranate

Four Ways to Water Trees



© G3, AlexStevens2022





Keep Trees Well Watered

Check the Soil to determine whether your trees need water. Pull the mulch away to expose the bare soil. Use a finger or screwdriver to explore the first few inches. You will need a soil probe (shown in picture) to extract a deeper soil sample. If the soil is dry below 3" deep, go ahead and water with the sample times shown in the chart below. If the deeper soil feels wet, hold off on



watering for a couple of days and check again. Younger trees generally need more frequent watering than mature trees because their roots are not established; older mature trees can be watered much less frequently but must be monitored for stress in extreme drought. Thinning canopy, leaf loss, discoloration or curl of leaves, and branch drop are all signs of stress that require deep watering.

Sample Weekly Watering Schedule

	 5gal hand water	 .9 GPH inline drip irrigation	 .5 GPM deep root bubbler	 2 GPM *spray irrigation
Summer Apr-Oct	25 gal	2 hrs.	20-24 min.	10-12 min.
Winter Nov-Mar	5 gal	30 min.	10 min.	5 min.

Apply amounts noted in chart 1x per week or as needed. Always limit run times to minimize run off. *Total minutes per week shown above. Consider multiple start times for spray areas.